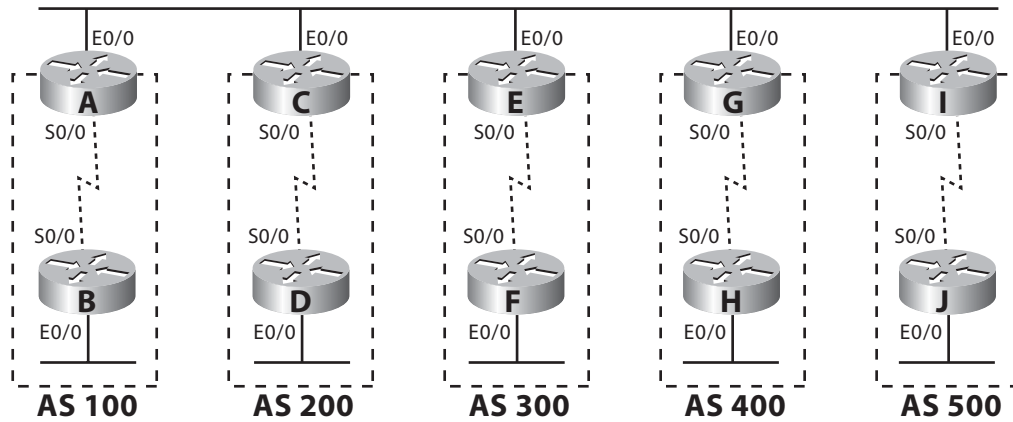


BGP

Topology



Objectives

- Interconnect the lab equipment to create the specified topology.
- Implement the IP addressing scheme as outlined by the instructor.
- Implement BGP according to the instructor's directions.
- Ensure that every router is able to ping every IP address within the lab internet.

New Commands

`router bgp as-number`

`network ip-network mask subnet-mask`

`neighbor neighbor-ip remote-as as-number`

`neighbor neighbor-ip next-hop-self`

`neighbor neighbor-ip description description`

`neighbor neighbor-ip version 4`

`neighbor neighbor-ip filter-list list-number in|out`

`no auto-summary`

`ip as-path access-list acl-num permit|deny regexp`